



# The ID.3

Effective from 01.10.2021



# The ID.3

## Electric

### Private Buyers

#### 58kWh Battery: 414km - 425km WLTP Range

Model Description <sup>1</sup>	Battery Size kWh <sup>2</sup>	Fuel Type / Transmission	Annual Road Tax	Output HP	Range km (WLTP Combined) <sup>3</sup>	Power Consumption WLTP, kWh/100km <sup>3</sup>	Combined CO <sub>2</sub> (WLTP) <sup>3</sup>	RRP Before State Subsidies <sup>4</sup>	RRP After State Subsidies <sup>4</sup>	Delivery & Service <sup>5</sup>	ROTR <sup>6</sup>
ID.3 LIFE	58	Electric / Single-Speed Auto	A €120	145	425	15.5	0	€39,190	<b>€31,666</b>	€1,300	€32,966
				204	425	15.5	0	€38,910*	<b>€31,404*</b>	€1,300	€32,704
								€41,170	<b>€33,518</b>	€1,300	€34,818
ID.3 COMFORT	58	Electric / Single-Speed Auto	A €120	145	422	15.6	0	€41,795	<b>€34,104</b>	€1,300	€35,404
ID.3 BUSINESS	58	Electric / Single-Speed Auto	A €120	145	421	15.6	0	€43,995	<b>€36,161</b>	€1,300	€37,461
				204	421	15.6	0	€45,950	<b>€37,990</b>	€1,300	€39,290
ID.3 FAMILY	58	Electric / Single-Speed Auto	A €120	145	418	15.8	0	€45,435	<b>€37,509</b>	€1,300	€38,809
				204	418	15.8	0	€47,150	<b>€39,113</b>	€1,300	€40,413
ID.3 EXECUTIVE	58	Electric / Single-Speed Auto	A €120	145	419	15.7	0	€46,510	<b>€38,515</b>	€1,300	€39,815
ID.3 TECH	58	Electric / Single-Speed Auto	A €120	145	416	15.8	0	€47,950	<b>€40,007</b>	€1,300	€41,307
				204	416	15.8	0	€49,650	<b>€42,489</b>	€1,300	€43,789
ID.3 MAX	58	Electric / Single-Speed Auto	A €120	145	414	15.9	0	€50,165	<b>€43,241</b>	€1,300	€44,541
				204	414	15.9	0	€51,870	<b>€45,730</b>	€1,300	€47,030

#### 77kWh Battery: 547km - 549km WLTP Range

Model Description <sup>1</sup>	Battery Size kWh <sup>2</sup>	Fuel Type / Transmission	Annual Road Tax	Output HP	Range km (WLTP Combined) <sup>3</sup>	Power Consumption WLTP, kWh/100km <sup>3</sup>	Combined CO <sub>2</sub> (WLTP) <sup>3</sup>	RRP Before State Subsidies <sup>4</sup>	RRP After State Subsidies <sup>4</sup>	Delivery & Service <sup>5</sup>	ROTR <sup>6</sup>
ID.3 TOUR 5	77	Electric / Single-Speed Auto	A €120	204	549	15.9	0	€48,535	<b>€40,861</b>	€1,300	€42,161
ID.3 TOUR	77	Electric / Single-Speed Auto	A €120	204	547	16.0	0	€50,765	<b>€44,117</b>	€1,300	€45,417

\*Selected pre-MY22 stock only. Please consult your local authorised Volkswagen retailer.

<sup>1</sup>This vehicle is a WLTP (Worldwide Harmonised Light-Duty Vehicles Test Procedure) type approved vehicle. More information is available at [www.volkswagen.ie/wltp](http://www.volkswagen.ie/wltp).

<sup>2</sup>Net to energy amount.

<sup>3</sup>The specified fuel consumption and emission values are the official figures obtained from tests under standardised EU test conditions in accordance with the Worldwide Harmonized Light Vehicles Test Procedure (WLTP), a more realistic test method for measuring fuel consumption (kWh/100km) and CO<sub>2</sub> emissions and are correct at the time of print. The above values reflect the standard vehicle excluding additional equipment such as optional extras and accessories which may have an effect on the fuel consumption (kWh/100km) and achievable range. WLTP range values for standard vehicles may vary depending on equipment. In practice, the actual range varies depending on driving style, speed, use of convenience/auxiliary equipment, outside temperature, number of passengers/additional load, and topography. To discover exact values please configure your desired vehicle at [volkswagen.ie/build](http://volkswagen.ie/build). You can discover more about the WLTP at [volkswagen.ie/wltp](http://volkswagen.ie/wltp).

To discover exact values please configure your desired vehicle at [volkswagen.ie/build](http://volkswagen.ie/build). You can discover more about the WLTP at [volkswagen.ie/wltp](http://volkswagen.ie/wltp).

<sup>4</sup>State subsidies refer to VRT relief and SEAI Grant for Private Customers, Business/Commercial Buyer State subsidy comprises of VRT relief, all of which are subject to approval. SEAI Grant is not applicable on vehicles with a list price of over €60,000.

<sup>5</sup>All prices (Retail, Delivery and ROTR) are recommended by Volkswagen Ireland and are inclusive of VAT. €1,300 includes optional 'S Pack' ID. Service Plan which can be removed upon request. 'S Pack' ID. Service Plan includes one service, with pollen filter and brake fluid replacement.

<sup>6</sup>Recommended 'On the Road' Retail price.

VRT Bands and rate of Annual Road Tax are valid as of 1st January 2021 and calculated from the base model WLTP values for model year 2022 cars produced from CW25/2021 onwards. All vehicles with TBC are subject to EU type approval and with that were not available at time of going to print.

Volkswagen IE may change RRP's at any time (this includes where there are changes in government regulation and/or legislation). There may be a delay to any RRP displaying correctly on our materials. Always obtain prices from your chosen authorised Volkswagen retailer.

In accordance with (EU) 2020/740 ("Tire Labeling Regulation"), please visit [volkswagen.ie](http://volkswagen.ie) configurator for details relating to the tyres applicable to said vehicles

Please note every effort has been made to ensure the contents of this publication (including RRP, CO<sub>2</sub>, fuel consumption and technical information) were accurate and up-to-date at the time of going print 1st October 2021. Volkswagen Ireland reserves the right to change specification, prices and withdraw products from sale without notice. Any such alternations will be notified to Volkswagen Retailers at the earliest opportunity. Please consult your local Authorised Volkswagen retailer for the latest product information.

# The ID.3

## Electric

### Business / Commercial Buyers

#### 58kWh Battery: 414km - 425km WLTP Range

Model Description <sup>1</sup>	Battery Size kWh <sup>2</sup>	Fuel Type / Transmission	Annual Road Tax	Output HP	Range km (WLTP Combined) <sup>3</sup>	Power Consumption WLTP, kWh/100km <sup>3</sup>	Combined CO <sub>2</sub> (WLTP) <sup>3</sup>	RRP Before State Subsidies <sup>4</sup>	RRP After State Subsidies <sup>4</sup>	Delivery & Service <sup>5</sup>	ROTR <sup>6</sup>
ID.3 LIFE	58	Electric / Single-Speed Auto	A €120	145	425	15.5	0	€39,190	€36,666	€1,300	€37,966
				204	425	15.5	0	€38,910*	€36,404*	€1,300	€37,704
ID.3 COMFORT	58	Electric / Single-Speed Auto	A €120	145	422	15.6	0	€41,795	€39,104	€1,300	€40,404
				204	421	15.6	0	€43,995	€41,161	€1,300	€41,461
ID.3 BUSINESS	58	Electric / Single-Speed Auto	A €120	145	421	15.6	0	€43,995	€41,161	€1,300	€41,461
				204	421	15.6	0	€45,950	€42,990	€1,300	€42,461
ID.3 FAMILY	58	Electric / Single-Speed Auto	A €120	145	418	15.8	0	€45,435	€42,509	€1,300	€43,809
				204	418	15.8	0	€47,150	€44,113	€1,300	€45,413
ID.3 EXECUTIVE	58	Electric / Single-Speed Auto	A €120	145	419	15.7	0	€46,510	€43,515	€1,300	€44,815
				204	416	15.8	0	€47,950	€45,007	€1,300	€46,307
ID.3 TECH	58	Electric / Single-Speed Auto	A €120	145	416	15.8	0	€47,950	€45,007	€1,300	€46,307
				204	416	15.8	0	€49,650	€47,489	€1,300	€48,789
ID.3 MAX	58	Electric / Single-Speed Auto	A €120	145	414	15.9	0	€50,165	€48,241	€1,300	€49,541
				204	414	15.9	0	€51,870	€50,730	€1,300	€52,030

#### 77kWh Battery: 547km - 549km WLTP Range

Model Description <sup>1</sup>	Battery Size kWh <sup>2</sup>	Fuel Type / Transmission	Annual Road Tax	Output HP	Range km (WLTP Combined) <sup>3</sup>	Power Consumption WLTP, kWh/100km <sup>3</sup>	Combined CO <sub>2</sub> (WLTP) <sup>3</sup>	RRP Before State Subsidies <sup>4</sup>	RRP After State Subsidies <sup>4</sup>	Delivery & Service <sup>5</sup>	ROTR <sup>6</sup>
ID.3 TOUR 5	77	Electric / Single-Speed Auto	A €120	204	549	15.9	0	€48,535	€45,861	€1,300	€47,161
ID.3 TOUR	77	Electric / Single-Speed Auto	A €120	204	547	16.0	0	€50,765	€49,117	€1,300	€50,417

\*Selected pre-MY22 stock only. Please consult your local authorised Volkswagen retailer.

<sup>1</sup>This vehicle is a WLTP (Worldwide Harmonised Light-Duty Vehicles Test Procedure) type approved vehicle. More information is available at [www.volkswagen.ie/wltp](http://www.volkswagen.ie/wltp).

<sup>2</sup>Net to energy amount.

<sup>3</sup>The specified fuel consumption and emission values are the official figures obtained from tests under standardised EU test conditions in accordance with the Worldwide Harmonized Light Vehicles Test Procedure (WLTP), a more realistic test method for measuring fuel consumption (kWh/100km) and CO<sub>2</sub> emissions and are correct at the time of print. The above values reflect the standard vehicle excluding additional equipment such as optional extras and accessories which may have an effect on the fuel consumption (kWh/100km) and achievable range. WLTP range values for standard vehicles may vary depending on equipment. In practice, the actual range varies depending on driving style, speed, use of convenience/auxiliary equipment, outside temperature, number of passengers/additional load, and topography. To discover exact values please configure your desired vehicle at [volkswagen.ie/build](http://volkswagen.ie/build). You can discover more about the WLTP at [volkswagen.ie/wltp](http://volkswagen.ie/wltp).

To discover exact values please configure your desired vehicle at [volkswagen.ie/build](http://volkswagen.ie/build). You can discover more about the WLTP at [volkswagen.ie/wltp](http://volkswagen.ie/wltp).

<sup>4</sup>State subsidies refer to VRT relief and SEAI Grant for Private Customers, Business/Commercial Buyer State subsidy comprises of VRT relief, all of which are subject to approval. SEAI Grant is not applicable on vehicles with a list price of over €60,000.

<sup>5</sup>All prices (Retail, Delivery and ROTR) are recommended by Volkswagen Ireland and are inclusive of VAT. €1,300 includes optional 'S Pack' ID. Service Plan which can be removed upon request. 'S Pack' ID. Service Plan includes one service, with pollen filter and brake fluid replacement.

<sup>6</sup>Recommended 'On the Road' Retail price.

VRT Bands and rate of Annual Road Tax are valid as of 1st January 2021 and calculated from the base model WLTP values for model year 2022 cars produced from CW25/2021 onwards. All vehicles with TBC are subject to EU type approval and with that were not available at time of going to print.

Volkswagen IE may change RRP's at any time (this includes where there are changes in government regulation and/or legislation). There may be a delay to any RRP displaying correctly on our materials. Always obtain prices from your chosen authorised Volkswagen retailer.

In accordance with (EU) 2020/740 ("Tire Labeling Regulation"), please visit [volkswagen.ie](http://volkswagen.ie) configurator for details relating to the tyres applicable to said vehicles

Please note every effort has been made to ensure the contents of this publication (including RRP, CO<sub>2</sub>, fuel consumption and technical information) were accurate and up-to-date at the time of going print 1st October 2021. Volkswagen Ireland reserves the right to change specification, prices and withdraw products from sale without notice. Any such alternations will be notified to Volkswagen Retailers at the earliest opportunity. Please consult your local Authorised Volkswagen retailer for the latest product information.



# ID.3 Equipment Highlights

**58kWh Battery: 414km - 425km WLTP Range**

## ID.3 Life



425km Range  
58kWh Battery  
145HP/204HP

- » 18" Steel Wheels
- » "Discover Pro" Navigation System
- » Natural voice control
- » Wireless phone charging
- » Heated front seats and steering wheel
- » Adaptive Cruise Control
- » Folding mirrors

**Private RRP:**

**€31,666\***

**Commercial RRP:**

**€36,666\*\***

## ID.3 Comfort



422km Range  
58kWh Battery  
145HP

### In addition to Life:

- » 18" Alloy wheels
- » Anti-Theft alarm
- » Rear view camera
- » Keyless Access advanced

**Private RRP:**

**€34,104\***

**Commercial RRP:**

**€39,104\*\***

## ID.3 Business



421km Range  
58kWh Battery  
145HP/204HP

### In addition to Life:

- » 18" Alloy wheels
- » Matrix LED Headlights
- » Tinted rear windows
- » Anti-Theft alarm
- » Rear view camera
- » Keyless Access advanced
- » ArtVelours/Leatherette interior

**Private RRP:**

**€36,161\***

**Commercial RRP:**

**€41,161\*\***

## ID.3 Family



418km Range  
58kWh Battery  
145HP/204HP

### In addition to Life:

- » 18" Alloy wheels
- » Matrix LED Headlights
- » Tinted rear windows
- » 2-zone climatronic
- » Rear view camera
- » Keyless Access advanced
- » Proactive occupant protection system
- » Panoramic sunroof

**Private RRP:**

**€37,509\***

**Commercial RRP:**

**€42,509\***

## ID.3 Executive



419km Range  
58kWh Battery  
145HP

### In addition to Life:

- » 18" Alloy wheels
- » Two additional speakers
- » Augmented reality Head-Up display
- » Travel Assist, Traffic Jam Assist
- » Emergency Assist, Side Assist
- » Area View

**Private RRP:**

**€38,515\***

**Commercial RRP:**

**€43,515\*\***

## ID.3 Tech



416km Range  
58kWh Battery  
204HP/145HP

### In addition to Style:

- » Augmented reality Head-Up display
- » Travel Assist, Traffic Jam Assist
- » Emergency Assist, Side Assist
- » Sound insulating windshield
- » Area View
- » Keyless Access advanced
- » Anti-Theft alarm
- » Two additional speakers

**Private RRP:**

**€40,007\***

**Commercial RRP:**

**€45,007\*\***

## ID.3 Max



414km Range  
58kWh Battery  
204HP/145HP

### In addition to Style:

- » Augmented reality Head-Up display
- » Travel Assist, Traffic Jam Assist
- » Emergency Assist, Side Assist
- » Sound insulating windshield
- » Rear view camera
- » Keyless Access advanced
- » Adaptive chassis control
- » Electric seats with massage function

**Private RRP:**

**€43,241\***

**Commercial RRP:**

**€48,241\*\***

<sup>1</sup>Selected pre-MY22 stock only. Please consult your local authorised Volkswagen retailer.

\*Prices are representative of RRP's after government incentives for private buyers

\*\*Prices are representative of RRP's after government incentives for commercial buyers

Effective from 01 October 2021, for production from CW25/2021 onwards. All prices include VAT and VRT. Prices and specifications are subject to change without notice.

# ID.3 Equipment Highlights

**77kWh Battery: 547km - 549km WLTP Range**

## ID.3 Tour 5



549m Range  
77kWh Battery  
204HP

### In addition to Business:

- » 19" Alloy wheels
- » Travel Assist, Traffic Jam Assist
- » Emergency Assist, Side Assist
- » Area View
- » 125kW DC charging

Private RRP:

**€40,861\***

Commercial RRP:

**€45,861\*\***

## ID.3 Tour



547km Range  
77kWh Battery  
204HP

### In addition to Business:

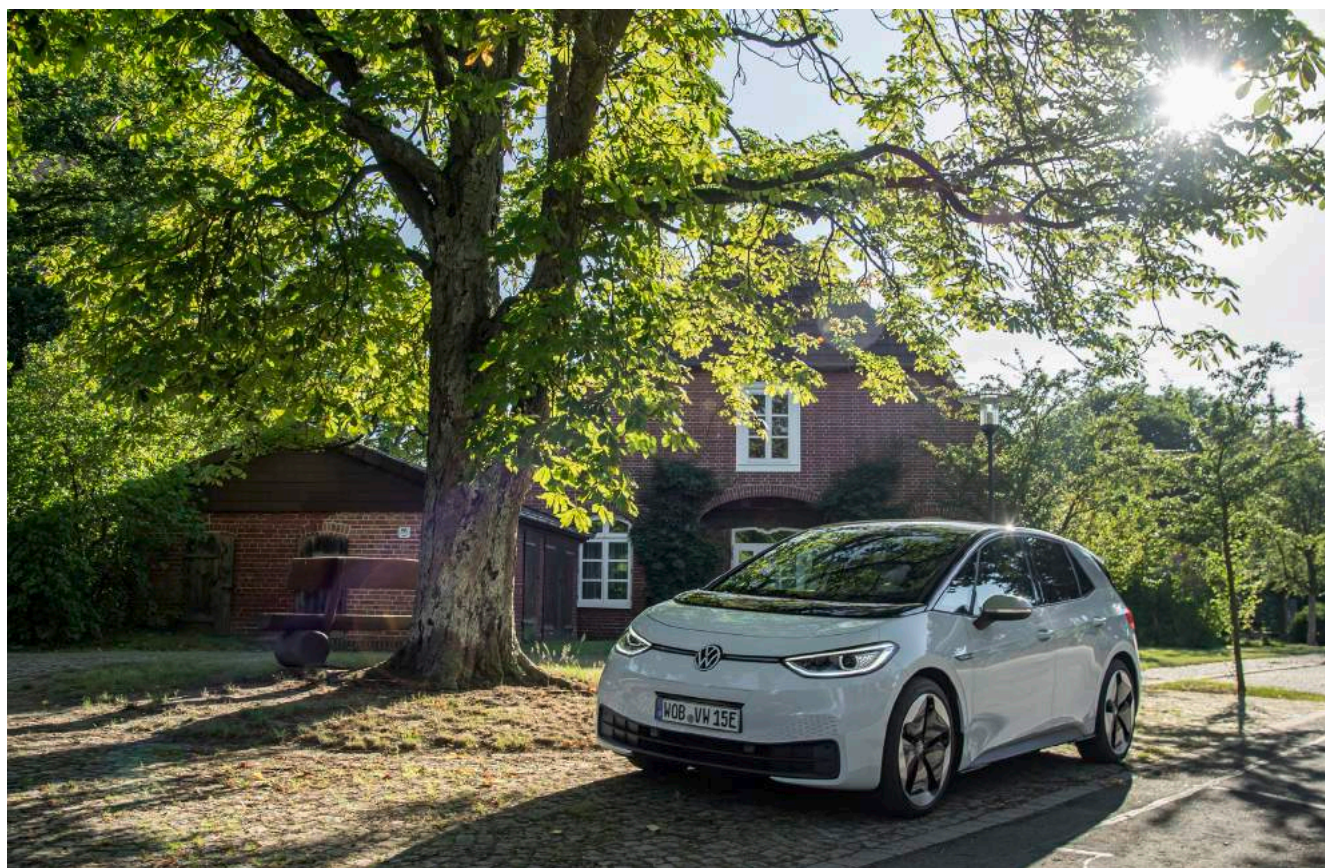
- » 19" Alloy wheels
- » 4 Seater
- » Augmented reality Head-Up display
- » Travel Assist, Traffic Jam Assist
- » Emergency Assist, Side Assist
- » Area View
- » 2-zone climatronic
- » Electric seats with massage function
- » 125kW DC charging

Private RRP:

**€44,117\***

Commercial RRP:

**€49,117\*\***



Note: The above image shows ID.3 Tour with optional 20" 'Sanya' alloy wheels and Silver Bi-Colour styling package

\*Prices are representative of RRP's after government incentives for private buyers

\*\*Prices are representative of RRP's after government incentives for commercial buyers



# ID.3 Life

From €31,666\*

58kWh Battery  
425km Range

## Interior Equipment

- » Leather wrapped multifunction steering wheel
- » Seat trim covers in 'Fragment' cloth upholstery
- » Centre console and armrest
- » Dimming interior rear view mirror
- » Interior ambient lighting in 10 colours
- » Carpet mats in front and rear
- » 4 speakers

## Exterior Equipment

- » 18" steel wheels
- » LED headlights with automatic headlight control
- » Tail lights incorporating LED technology
- » Exterior mirrors power adjustable, heated
- » Black roof and rear hatch

## Functional Equipment

- » 10" Infotainment system
- » 1-Zone Air Care Climatronic
- » 'Keyless Start' without SAFELOCK
- » 2 front USB-C interfaces
- » Forward Collision Warning 'Front Assist'
- » Car 2X Technology car-to-car wireless information transfer
- » Adaptive cruise control ACC stop & go incl. speed limiter
- » Wired App Connect (Android Auto) and wireless App Connect (Apple CarPlay)
- » We Connect Start
- » Park Distance control - warning signals for obstacles in front and rear
- » Dynamic Road Sign Display
- » eCall emergency call service
- » Natural voice control
- » Driving Profile Selection
- » Digital cockpit with Gear Selector on steering column
- » Diversity antenna for FM reception
- » Digital Radio Reception DAB+
- » Tool Kit
- » Tyre Pressure monitoring system

## Infotainment Package

- » Navigation system "Discover Pro"
- » Comfort mobile phone interface
- » Wireless smartphone charging

## Comfort Package

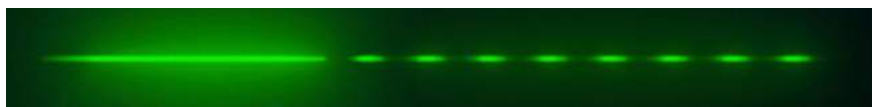
- » Folding exterior mirrors, power adjustable, heated and with front passenger exterior mirror lowering function
- » Heated front window washer nozzles
- » Rain sensor
- » Exterior surround lighting with unique puddle light design
- » Heated front seats
- » Heated steering wheel
- » Automatic dimming for interior mirror
- » Centre console with illuminated storage compartment and sliding cover
- » 2 rear USB-C charging ports

## Safety

- » Driver's and front passenger's airbag with front passenger deactivation
- » Curtain and side airbag in front, with center airbag
- » ISOFIX anchorage points for two child seats on rear and front passenger seat
- » Safety-optimised front head restraints
- » 3 rear headrests, all lowerable
- » 3-point seat belts front with seat belt pretensioner
- » 3-point seat belts, rear
- » Warning signal and warning light for front and rear seat belts not fastened
- » Reflectors in all doors
- » Hill start assist
- » Emergency braking with pedestrian and cyclist monitoring
- » Electronic steering column lock
- » Electromechanical speed-sensitive power steering
- » Electronic Engine Immobiliser
- » Electric mechanical Brake Booster
- » Electronic engine sound between 0-30km/h
- » Oncoming vehicle braking when turning and swerve support
- » Driver Alert System
- » First Aid Kit and warning triangle

## Charging Equipment

- » Three pin home socket charging cable, 10A
- » Charging cable Mode 3 Type 2, 32 A
- » Battery charging capacity - max. 11kW AC, max. 120kW DC
- » 8 year battery warranty or 160,000km, which ever comes first



The above specifications are for information purposes only as our products are continually updated and changes may be made to the specifications at any time. If you require any specific feature, you must consult your local dealer who is regularly updated with any change in specification. Specifications are subject to change without notice.

\*Prices are representative of RRP's after government incentives for private buyers

Effective from 01 October 2021, for production from CW25/2021 onwards. All prices include VAT and VRT. Prices and specifications are subject to change without notice.

# ID.3 Comfort (in addition to Life)

From €34,104\*

58kWh Battery  
422km Range

## Exterior Equipment

- » 18" 'East Derry' alloy wheel

## Assistance Package

- » Rear view camera
- » "Keyless Access Advanced" locking and starting system
- » IQ. Light "Eye Technology" welcome scenarios
- » Illuminated door handles
- » Anti-Theft alarm
- » Proactive occupant protection system



# ID.3 Business (in addition to Life)

From €36,161\*

58kWh Battery  
421km Range



## Design Package

- » LED Matrix headlights incl. "Dynamic Light Assist" and IQ. Light
- » Dynamic rear LED taillights with configurable animation and dynamic turn signals
- » Interior ambient lighting in 30 colours
- » Tinted rear windows

## Interior Equipment

- » Seat trim covers in "Flow" ArtVelours upholstery
- » Interior finished in Microfleece, ArtVelours and Leatherette
- » Rear centre arm rest
- » 2 rear cup holders
- » 60:40 Split rear seats with load through hatch
- » Play/Pause pedals

## Exterior Equipment

- » 18" 'East Derry' alloy wheel

## Assistance Package

- » Rear view camera
- » "Keyless Access Advanced" locking and starting system
- » IQ. Light "Eye Technology" welcome scenarios
- » Illuminated door handles
- » Anti-Theft alarm
- » Proactive occupant protection system



The above specifications are for information purposes only as our products are continually updated and changes may be made to the specifications at any time. If you require any specific feature, you must consult your local dealer who is regularly updated with any change in specification. Specifications are subject to change without notice.

\*Prices are representative of RRP's after government incentives for private buyers

Effective from 01 October 2021, for production from CW25/2021 onwards. All prices include VAT and VRT. Prices and specifications are subject to change without notice.

# ID.3 Family (in addition to Life)

From €37,509\*

58kWh Battery  
418km Range

## Comfort Package Plus

- » Folding exterior mirrors, power adjustable, heated and with front passenger exterior mirror lowering function
- » Heated front window washer nozzles
- » Rain sensor
- » Exterior surround lighting with unique puddle light design
- » Heated front seats
- » Heated steering wheel
- » Automatic dimming for interior mirror
- » Centre console with illuminated storage compartment and sliding cover
- » 2 rear USB-C charging ports
- » **Climatronic with 2-zone temperature control**
- » **Additional underfloor luggage compartment**

## Interior Equipment

- » Seat trim covers in "Flow" ArtVelours upholstery
- » Interior finished in Microfleece, ArtVelours and Leatherette
- » Rear centre arm rest
- » 2 rear cup holders
- » 60:40 Split rear seats with load through hatch
- » Play/Pause pedals

## Design Package Plus

- » LED Matrix headlights incl. "Dynamic Light Assist" and IQ. Light
- » Dynamic rear LED taillights with configurable animation and dynamic turn signals
- » Interior ambient lighting in 30 colours
- » Tinted rear windows
- » **Panoramic sunroof**

## Exterior Equipment

- » 18" 'East Derry' alloy wheel

## Assistance Package

- » Rear view camera
- » "Keyless Access Advanced" locking and starting system
- » IQ. Light "Eye Technology" welcome scenarios
- » Illuminated door handles
- » Anti-Theft alarm
- » Proactive occupant protection system



# ID.3 Executive (in addition to Life)

From €38,515\*

58kWh Battery  
419km Range

## Interior Equipment

- » Seat trim covers in "Flow" ArtVelours upholstery
- » Interior finished in Microfleece, ArtVelours and Leatherette
- » Rear centre arm rest
- » 2 rear cup holders
- » 60:40 Split rear seats with load through hatch
- » Play/Pause pedals



## Design Package

- » LED Matrix headlights incl. "Dynamic Light Assist" and IQ. Light
- » Dynamic rear LED taillights with configurable animation and dynamic turn signals
- » Interior ambient lighting in 30 colours
- » Tinted rear windows

## Infotainment Package Plus

- » Navigation system "Discover Pro"
- » Comfort mobile phone interface
- » Wireless smartphone charging
- » **Augmented reality head-up display**
- » **Two additional speakers**
- » **Sound insulating windshield**

## Exterior Equipment

- » 18" 'East Derry' alloy wheel

## Assistance Package Plus

- » Rear view camera
- » "Keyless Access Advanced" locking and starting system
- » IQ. Light "Eye Technology" welcome scenarios
- » Illuminated door handles
- » Anti-Theft alarm
- » Proactive occupant protection system
- » **Driving assistant "Travel Assist"**
- » **Lane-keeping assistant "Side Assist"**
- » **"Emergency Assist"**
- » **"Traffic Jam Assist"**
- » **Area View**



The above specifications are for information purposes only as our products are continually updated and changes may be made to the specifications at any time. If you require any specific feature, you must consult your local dealer who is regularly updated with any change in specification. Specifications are subject to change without notice.

\*Prices are representative of RRP's after government incentives for private buyers

Effective from 01 October 2021, for production from CW25/2021 onwards. All prices include VAT and VRT. Prices and specifications are subject to change without notice.



# ID.3 Tech (in addition to Life)

58kWh Battery  
416km Range

From €40,007\*

## Comfort Package Plus

- » Folding exterior mirrors, power adjustable, heated and with front passenger exterior mirror lowering function
- » Heated front window washer nozzles
- » Rain sensor
- » Exterior surround lighting with unique puddle light design
- » Heated front seats
- » Heated steering wheel
- » Automatic dimming for interior mirror
- » Centre console with illuminated storage compartment and sliding cover
- » 2 rear USB-C charging ports
- » **Climatronic with 2-zone temperature control**
- » **Additional underfloor luggage compartment**

## Interior Equipment

- » Seat trim covers in "Flow" ArtVelours upholstery
- » Interior finished in Microfleece, ArtVelours and Leatherette
- » Rear centre arm rest
- » 2 rear cup holders
- » 60:40 Split rear seats with load through hatch
- » Play/Pause pedals

## Design Package Plus

- » LED Matrix headlights incl. "Dynamic Light Assist" and IQ. Light
- » Dynamic rear LED taillights with configurable animation and dynamic turn signals
- » Interior ambient lighting in 30 colours
- » Tinted rear windows
- » **Panoramic sunroof**

## Infotainment Package Plus

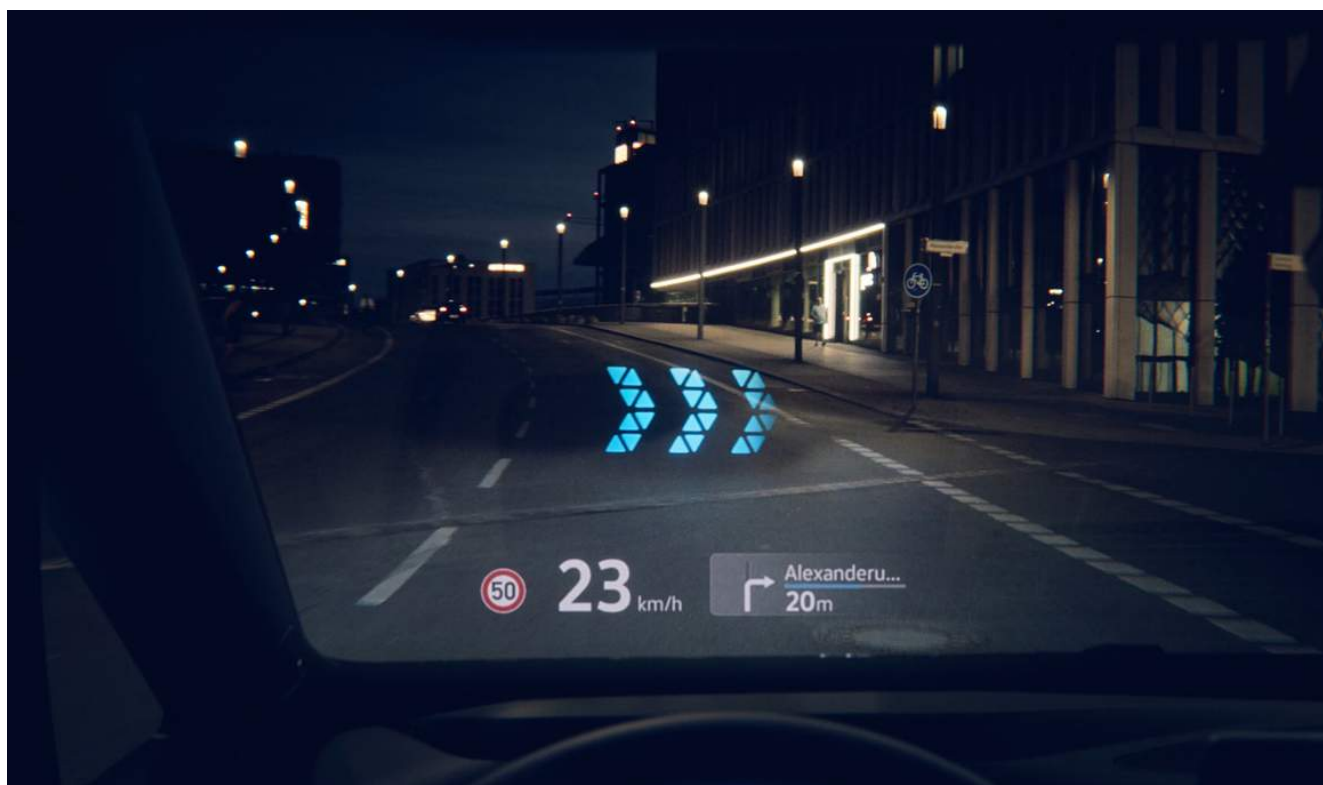
- » Navigation system "Discover Pro"
- » Comfort mobile phone interface
- » Wireless smartphone charging
- » **Augmented reality head-up display**
- » **Two additional speakers**
- » **Sound insulating windshield**

## Exterior Equipment

- » 18" 'East Derry' alloy wheel

## Assistance Package Plus

- » Rear view camera
- » "Keyless Access Advanced" locking and starting system
- » IQ. Light "Eye Technology" welcome scenarios
- » Illuminated door handles
- » Anti-Theft alarm
- » Proactive occupant protection system
- » **Driving assistant "Travel Assist"**
- » **Lane-keeping assistant "Side Assist"**
- » **"Emergency Assist"**
- » **"Traffic Jam Assist"**
- » **Area View**



The above specifications are for information purposes only as our products are continually updated and changes may be made to the specifications at any time. If you require any specific feature, you must consult your local dealer who is regularly updated with any change in specification. Specifications are subject to change without notice.

\*Prices are representative of RRP's after government incentives for private buyers

Effective from 01 October 2021, for production from CW25/2021 onwards. All prices include VAT and VRT. Prices and specifications are subject to change without notice.

# ID.3 Max (in addition to Life)

From €43,241\*

58kWh Battery  
414km Range

## Comfort Package Plus

- » Folding exterior mirrors, power adjustable, heated and with front passenger exterior mirror lowering function
- » Heated front window washer nozzles
- » Rain sensor
- » Exterior surround lighting with unique puddle light design
- » Heated front seats
- » Heated steering wheel
- » Automatic dimming for interior mirror
- » Centre console with illuminated storage compartment and sliding cover
- » 2 rear USB-C charging ports
- » **Climatronic with 2-zone temperature control**
- » **Additional underfloor luggage compartment**

## Interior Equipment

- » ErgoActive seats in front with power adjustment
- » Thigh support
- » Pneumatically adjusted lumbar support in front
- » Massage functionality
- » 2 rear cup holders
- » Seat trim covers in "Flow" ArtVelours upholstery
- » Interior finished in Microfleece, ArtVelours and Leatherette
- » 60:40 Split rear seats with load through hatch
- » Rear centre arm rest
- » Play/Pause pedals

## Design Package Plus

- » LED Matrix headlights incl. "Dynamic Light Assist" and IQ. Light
- » Dynamic rear LED taillights with configurable animation and dynamic turn signals
- » Interior ambient lighting in 30 colours
- » Tinted rear windows
- » **Panoramic sunroof**

## Infotainment Package Plus

- » Navigation system "Discover Pro"
- » Comfort mobile phone interface
- » Wireless smartphone charging
- » **Augmented reality head-up display**
- » **Two additional speakers**
- » **Sound insulating windshield**

## Exterior Equipment

- » 18" 'East Derry' alloy wheel

## Assistance Package Plus

- » Rear view camera
- » "Keyless Access Advanced" locking and starting system
- » IQ. Light "Eye Technology" welcome scenarios
- » Illuminated door handles
- » Anti-Theft alarm
- » Proactive occupant protection system
- » **Driving assistant "Travel Assist"**
- » **Lane-keeping assistant "Side Assist"**
- » **"Emergency Assist"**
- » **"Traffic Jam Assist"**
- » **Area View**

## Sport Package Plus

- » Progressive steering
- » Sports suspension
- » **Adaptive chassis control "Dynamic Chassis Control"**



The above specifications are for information purposes only as our products are continually updated and changes may be made to the specifications at any time. If you require any specific feature, you must consult your local dealer who is regularly updated with any change in specification. Specifications are subject to change without notice.

\*Prices are representative of RRP's after government incentives for private buyers

Effective from 01 October 2021, for production from CW25/2021 onwards. All prices include VAT and VRT. Prices and specifications are subject to change without notice.

# ID.3 Tour 5 (in addition to Life)

From €40,861\*

77kWh Battery  
549km Range

## Interior Equipment

- » Seat trim covers in "Flow" ArtVelours upholstery
- » Interior finished in Microfleece, ArtVelours and Leatherette
- » 60:40 Split rear seats with load through hatch
- » Rear centre arm rest
- » Play/Pause pedals

## Exterior Equipment

- » 19" 'Andoya' alloy wheels with AirStop tyres

## Charging Equipment

- » Battery charging capacity - Max. 11kW AC, Max. 125kW DC

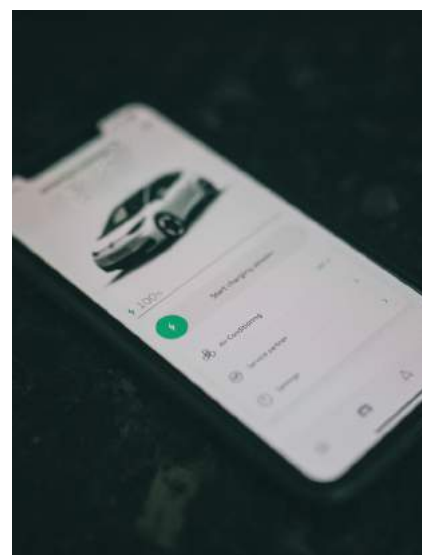
## Design Package

- » LED Matrix headlights incl. "Dynamic Light Assist" and IQ. Light
- » Dynamic rear LED taillights with configurable animation and dynamic turn signals
- » Interior ambient lighting in 30 colours
- » Tinted rear windows



## Assistance Package Plus

- » Rear view camera
- » "Keyless Access Advanced" locking and starting system
- » IQ. Light "Eye Technology" welcome scenarios
- » Illuminated door handles
- » Anti-Theft alarm
- » Proactive occupant protection system
- » **Driving assistant "Travel Assist"**
- » **Lane-keeping assistant "Side Assist"**
- » **"Emergency Assist"**
- » **"Traffic Jam Assist"**
- » **Area View**



Note: The above images show optional Silver Bi-Colour Styling Package

Note: ID.3 Tour 5 is a fully fledged 5-seat passenger vehicle

The above specifications are for information purposes only as our products are continually updated and changes may be made to the specifications at any time. If you require any specific feature, you must consult your local dealer who is regularly updated with any change in specification. Specifications are subject to change without notice.

\*Prices are representative of RRP's after government incentives for private buyers

Effective from 01 October 2021, for production from CW25/2021 onwards. All prices include VAT and VRT. Prices and specifications are subject to change without notice.



# ID.3 Tour (in addition to Life)

From €44,117\*

77kWh Battery  
547km Range

## Interior Equipment

- » 4 Seater - 2 passengers in front, 2 passengers in rear
- » ErgoActive seats in front with power adjustment
- » High support
- » Pneumatically adjusted lumbar support in front
- » Massage functionality
- » 2 rear cup holders
- » Seat trim covers in "Flow" ArtVelours upholstery
- » Interior finished in Microfleece, ArtVelours and Leatherette
- » 60:40 Split rear seats with load through hatch
- » Rear centre arm rest
- » Play/Pause pedals

## Exterior Equipment

- » 19" 'Andoya' alloy wheels with AirStop tyres

## Charging Equipment

- » Battery charging capacity - Max. 11kW AC, Max. 125kW DC

## Infotainment Package Plus

- » Navigation system "Discover Pro"
- » Comfort mobile phone interface
- » Wireless smartphone charging
- » **Augmented reality head-up display**
- » **Two additional speakers**
- » **Sound insulating windshield**

## Comfort Package Plus

- » Folding exterior mirrors, power adjustable, heated and with front passenger exterior mirror lowering function
- » Heated front window washer nozzles
- » Rain sensor
- » Exterior surround lighting with unique puddle light design
- » Heated front seats
- » Heated steering wheel
- » Automatic dimming for interior mirror
- » Centre console with illuminated storage compartment and sliding cover
- » 2 rear USB-C charging ports
- » **Climatronic with 2-zone temperature control**
- » **Additional underfloor luggage compartment**



## Design Package

- » LED Matrix headlights incl. "Dynamic Light Assist" and IQ. Light
- » Dynamic rear LED taillights with configurable animation and dynamic turn signals
- » Interior ambient lighting in 30 colours
- » Tinted rear windows

## Assistance Package Plus

- » Rear view camera
- » "Keyless Access Advanced" locking and starting system
- » IQ. Light "Eye Technology" welcome scenarios
- » Illuminated door handles
- » Anti-Theft alarm
- » Proactive occupant protection system
- » **Driving assistant "Travel Assist"**
- » **Lane-keeping assistant "Side Assist"**
- » **"Emergency Assist"**
- » **"Traffic Jam Assist"**
- » **Area View**



Note: The above images show optional Silver Bi-Colour Styling Package

The above specifications are for information purposes only as our products are continually updated and changes may be made to the specifications at any time. If you require any specific feature, you must consult your local dealer who is regularly updated with any change in specification. Specifications are subject to change without notice.

\*Prices are representative of RRP's after government incentives for private buyers

Effective from 01 October 2021, for production from CW25/2021 onwards. All prices include VAT and VRT. Prices and specifications are subject to change without notice.

# Options

## Functional

			Life	Comfort	Business	Family	Exec.	Tech	Max	Tour 5	Tour	Options Priced From RRP
WPU	HEAT PUMP	Recycles heat from ambient air and waste heat from the drivetrain components to reduce electric power usage of the heating system	○	○	○	○	○	○	○	○	○	€1,159

## Styling

			Life	Comfort	Business	Family	Exec.	Tech	Max	Tour 5	Tour	Options Priced From RRP
WM2	'PENNY COPPER' BI-COLOUR STYLING PACKAGE	Roof trim strip and rear pillar finished in Penny Copper. Front air intake, side sills and rear sill finished in Grey-Tech Metallic. 18" Steel wheel on Life models also gains two-tone finish (See Page 17) <i>Note: Not available in conjunction with Makena Turquoise Metallic Paint</i>	○	○	○	○	○	○	○	○	○	€556
WM1	SILVER BI-COLOUR STYLING PACKAGE	Roof trim strip and rear pillar finished in Silver. Front air intake, side sills and rear sill finished in Grey-Tech Metallic. 18" Steel wheel on Life models also gains two-tone finish (See Page 17) <i>Note: Not available in conjunction with Scale Silver Metallic Paint</i>	○	○	○	○	○	○	○	○	○	€556

## Comfort

			Life	Comfort	Business	Family	Exec.	Tech	Max	Tour 5	Tour	Options Priced From RRP
PBJ	TOP-SPORT "PLUS" INTERIOR WITH SPORTS SEATS	Sports orientated front seats with integrated head rests finished in Microfleece cloth and ArtVelours	-	-	-	-	-	-	○	-	○	€1,522

## Wheels

			Life	Comfort	Business	Family	Exec.	Tech	Max	Tour 5	Tour	Options Priced From RRP
PJD	19" 'ANDOYA' ALLOY WHEELS WITH AIRSTOP TYRES	7.5J x 19 alloy wheels. Wheel locks with extended anti-theft protection. 215/50 R19 tyres.	-	○	○	○	○	○	○	■	■	€619
PJF	19" 'ANDOYA' ALLOY WHEELS IN 'PENNY COPPER' WITH AIRSTOP TYRES	7.5J x 19 alloy wheels. Wheel locks with extended anti-theft protection. 215/50 R19 tyres.	-	○	○	○	○	○	○	-	-	€677 €56
PJH	20" 'SANYA' ALLOY WHEELS WITH AIRSTOP TYRES	7.5J x 20 alloy wheels. Wheel locks with extended anti-theft protection. 215/45 R20 tyres.	-	○	○	○	○	○	○	-	-	€1,300 €683

For exact options prices for your vehicle, please contact your local dealer or visit [www.volkswagen.ie](http://www.volkswagen.ie)

■ Standard ○ Optional - Not available

# Colours



**Moonstone Grey Solid**      **C2A1**

RRP €0



**Manganese Grey Metallic\***      **5VA1**

RRP €693



**Glacier White Metallic\***      **2YA1**

RRP €693



**Makena Turquoise Metallic\***      **0ZA1**

RRP €864



**Scale Silver Metallic\***      **1TA1**

RRP €693



**Stonewashed Blue Metallic\***      **5YA1**

RRP €693



**King's Red Metallic\***      **P8A1**

RRP €864

\*Optional at extra cost

Please note, the print processes do not allow exact reproduction of the paint colours.



# Upholstery



**"Fragment" Cloth**  
Platinum Grey/Soul  
Standard on ID.3 Life & Comfort



**"Flow" 'ArtVelours' Microfleece**  
Platinum Grey/Dusty Grey Dark  
Standard from ID.3 Business

# Interior



Note: The above image shows Play/Pause pedals, only available from Business

**Standard on ID.3 Life & Comfort**

Platinum Grey/Piano Black



**Standard from ID.3 Business**

Dusty Grey Dark/ Piano Black



**Standard from ID.3 Business**

Dusty Grey Dark/ Electric White



**Standard from ID.3 Business**

Safrano Orange/ Electric White

Note: Some parts of leather interior trim will contain artificial leather  
Note: The print processes do not allow exact reproduction of the upholstery & insert colours.

Effective from 01 October 2021, for production from CW25/2021 onwards. All prices include VAT and VRT. Prices and specifications are subject to change without notice.

# Colour and Fabric Combinations

Interior code	Trim seat	Carpet	Door Insert	Steering Wheel	Headliner	Moonstone Grey Solid C2A1	Manganese Grey Metallic* 5VA1	Glacier White Metallic* 2YA1	Makena Turquoise Metallic* 0ZA1	Scale Silver Metallic* 1TA1	Stone-washed Blue Metallic* 5YA1	King's Red Metallic* P8A1
<b>Standard on ID.3 Life &amp; Comfort</b>												
"Fragment" Base	XX	Platinum Grey/ Soul	Black	Cloth finished in Black	Black	Platinum Grey	<input type="checkbox"/>	<input type="checkbox"/>	<input type="checkbox"/>	<input type="checkbox"/>	<input type="checkbox"/>	<input type="checkbox"/>
<b>Standard on ID.3 Business, Family, Executive, Tech, Max, Tour 5, Tour</b>												
"Flow" Design	XV PBF (PBE <sup>1</sup> )	Platinum Grey/ Dusty Grey Dark	Black	Leatherette finished in White	White	Platinum Grey	<input type="checkbox"/>	<input type="checkbox"/>	<input type="checkbox"/>	<input type="checkbox"/>	<input type="checkbox"/>	<input type="checkbox"/>
"Flow" Design	XF	Platinum Grey/ Dusty Grey Dark	Black	Leatherette finished in Black	Black	Platinum Grey	<input type="checkbox"/>	<input type="checkbox"/>	<input type="checkbox"/>	<input type="checkbox"/>	<input type="checkbox"/>	<input type="checkbox"/>
"Flow" Design	XZ PBF (PBE <sup>1</sup> )	Platinum Grey/ Dusty Grey Dark	Black	Leatherette finished in White/Orange	White	Platinum Grey	<input type="checkbox"/>	<input type="checkbox"/>	<input type="checkbox"/>	-	<input type="checkbox"/>	<input type="checkbox"/>
<b>Optional on ID.3 Max &amp; Tour</b>												
Top Sport "Plus"	L0	Black-Dusty Grey Dark-Ceramique	Black	Leatherette finished in Black	Black	Platinum Grey	<input type="checkbox"/>	<input type="checkbox"/>	<input type="checkbox"/>	<input type="checkbox"/>	<input type="checkbox"/>	<input type="checkbox"/>

<sup>1</sup>Use for ID.3 Max

Available –  Not available \*Optional at extra cost

# Alloy Wheels



**STANDARD ON ID.3 Life**  
18" Steel wheels  
7.5J x 18 Tyres: 215/55 R18



**STANDARD ON ID.3 Comfort, Business, Family, Executive, Tech & Max**  
18" 'East Derry' alloy wheels  
7.5J x 18 Tyres: 215/55 R18



**STANDARD ON ID.3 Tour 5, Tour**  
**OPTIONAL ON ID.3 Business, Family, Executive, Tech & Max**  
19" 'Andoya' alloy wheels  
7.5J x 19 Tyres: 215/50 R19



**OPTIONAL ON ID.3 Business, Family, Executive, Tech, Max, Tour**  
20" 'Sanya' alloy wheels  
7.5J x 20 Tyres: 215/45 R20



**OPTIONAL ON ID.3 Life**  
18" Steel wheels with Bi-Colour package  
7.5J x 18 Tyres: 215/55 R18



**OPTIONAL ON ID.3 Business, Family, Executive, Tech, Max, Tour 5 & Tour**  
19" 'Andoya' alloy wheels in 'Penney Copper'  
7.5J x 19 Tyres: 215/50 R19



# Technical Data

	ID.3 Pro <sup>1</sup>	ID.3 Pro Performance <sup>1</sup>	ID.3 Pro S <sup>1</sup>
Engine	58kWh	58kWh	77kWh
Engine type	Electric	Electric	Electric
Driving range WLTP Combined, km	414-425	414-425	547-549
Max. output, HP/kW	145/107	204/150	204/150
Max. torque, Nm	TBC	310	310
Gearbox	Single-speed	Single-speed	Single-speed
Performance			
Top speed, km/h, where the law permits:	160	160	160
Acceleration, secs 0 – 100km/h:	9.6	7.3	7.9
Battery and charging system			
Battery type	Lithium Ion	Lithium Ion	Lithium Ion
Weight of battery, kgs	336	336	TBC
Gross vehicle weight, kgs	2,260	2,260	2,280 (2,300 on Tour 5)
Rated capacity, kWh	58	58	77
Official consumption WLTP*, kWh/100km	15.5 - 17.0	15.5 - 17.0	16.1 - 16.9
Number of cells	216	216	TBC
Nominal voltage, V	399.6	399.6	TBC
Charging time, AC, 2.3kW 0%-100%, hour <sup>2</sup>	25h0m	25h0m	TBC
Charging time, AC, 7.4kW 0%-100%, hour <sup>2</sup>	9h30m	9h30m	TBC
Charging time, DC 5%-80%, hour <sup>2</sup>	0h35m	0h35m	0h38m
Combined CO2 emissions, g/km	0	0	0

<sup>1</sup>VRT Bands and rate of Annual Road Tax are valid as of 1st January 2021 and calculated from the base model WLTP values for model year 2022 cars produced from CW25/2021 onwards. All vehicles with TBC are subject to EU type approval and with that were not available at time of going to print.

<sup>2</sup>These are average charging times that can vary depending on certain conditions, such as temperature.

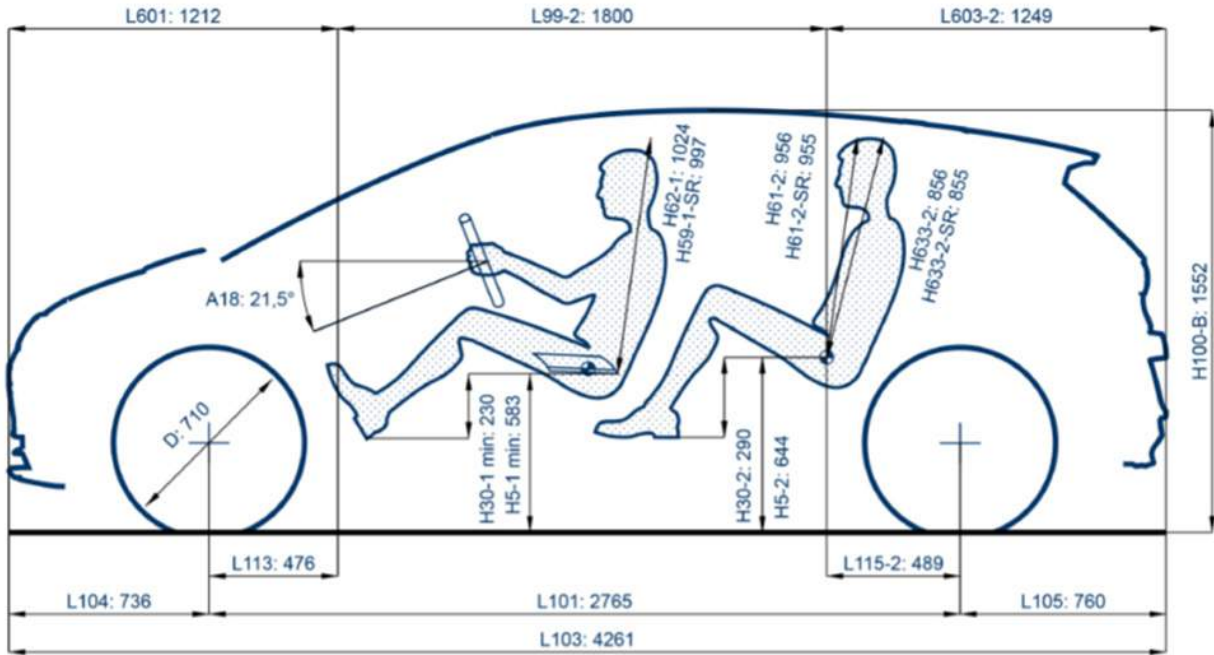
The specified fuel consumption and emission values are the official figures obtained from tests under standardised EU test conditions in accordance with the Worldwide Harmonized Light Vehicles Test Procedure (WLTP), a more realistic test method for measuring fuel consumption (kWh/100km) and CO<sub>2</sub> emissions and are correct at the time of print. The above values reflect the standard vehicle excluding additional equipment such as optional extras and accessories which may have an effect on the fuel consumption (kWh/100km) and achievable range. WLTP range values for standard vehicles may vary depending on equipment. In practice, the actual range varies depending on driving style, speed, use of convenience/auxiliary equipment, outside temperature, number of passengers/additional load, and topography. To discover exact values please configure your desired vehicle at [volkswagen.ie/build](http://volkswagen.ie/build). You can discover more about the WLTP at [volkswagen.ie/wltp](http://volkswagen.ie/wltp).

In accordance with (EU) 2020/740 ("Tire Labeling Regulation"), please visit [volkswagen.ie](http://volkswagen.ie) configurator for details relating to the tyres applicable to said vehicles

Please note every effort has been made to ensure the contents of this publication (including RRP, CO<sub>2</sub>, fuel consumption and technical information) were accurate and up-to-date at the time of going print 1st October 2021. Volkswagen Ireland reserves the right to change specification, prices and withdraw products from sale without notice. Any such alternations will be notified to Volkswagen Retailers at the earliest opportunity. Please consult your local Authorised Volkswagen retailer for the latest product information.

# The ID.3

## Product Dimensions



Track in front:  
W101-1: 1,536

Track in front:  
W101-2: 1,513

Width Excluding  
exterior mirrors:  
1,809

Width Including  
exterior mirrors:  
2,070

Boot Capacity, ltrs:  
385 (1,267 with rear  
seats folded)

# Grants & Incentives

## Grants

		Private	Commercial
VRT REBATE	VRT relief is available for battery electric vehicles. The VRT relief for Battery Electric vehicles is tapered by 50% for every €1 for vehicles with an OMSP over €40,000, so that no amount of relief is available for BEVs with an OMSP value of over €50,000	■	■
SEAI GRANT	€5,000 available off the RRP for private use	■	–
HOME CHARGER INSTALLATION GRANT	€600 rebate following installation and signoff by SafeElectric registered installer	■	■

## Incentives

		Private	Commercial
CHARGE POINT MAP	ESB eCARS manage a free app allowing users to identify charge points and their availability <a href="https://www.esb.ie/our-businesses/ecars/charge-point-map">https://www.esb.ie/our-businesses/ecars/charge-point-map</a>	■	■
WE CHARGE	Reduced price tariffs for ID.3 customers.	■	■
TOLL FEES	From July 2018-2022 there is an Electric Vehicle tolling incentive - this will provide savings of up to €500 per annum	■	■
0% BENEFIT IN KIND (BIK)	Battery Electric vehicles used as Company cars are fully exempt from BIK for 3-5 years, <i>Note: It is important to get the advice from your accountant or tax adviser to ensure that you are eligible in advance</i>	–	■
ACCELERATED CAPITAL ALLOWANCE	It allows companies to deduct the full cost of such equipment from their taxable profits in the same year of purchase. <i>Note: It is subject to the same rules as the standard plant &amp; machinery wear and tear allowance</i>	–	■
FREE/REDUCED PARKING	Some local authorities allow for free parking when charging	■	■



■ Standard – Not available



# We Charge

## We Charge Benefits

- » Reduced tariffs for ID.3 customers
- » Simple registration with your Volkswagen ID account
- » Search and find public charging points
- » Pre-planning tours with charge stops
- » Starting and stopping charging processes
- » Easy management of charge cards & tariffs
- » Full cost control through price transparency for charging points
- » ID. Charger Connect/Pro management and remote control



## IONITY

With IONITY, you have the freedom to go, and the power to be spontaneous. Europe's leading, high power charging network for electric vehicles (EVs) means only stopping when you want to stretch your legs – and the confidence to travel across Ireland.

- » 6 charging stations along major motorways in Ireland
- » Average 120 km to the next IONITY charging station
- » An average of 4 - 6 charging points per station
- » ID.3 has a charging capacity up to 125kW and can charge from 5% to 80% in only 35 minutes with IONITY
- » A record-setting, high-speed charging capacity of up to 350kW DC (depending on capacity of car)
- » An experience so intuitive you already know how to use it.
- » Fully integrated with We Charge
- » All IONITY stations are powered by 100% renewable energy
- » Use of the European CCS charging standard, achieving the widest compatibility across electric vehicles past, present, and future



For further information visit [www.ionity.eu](http://www.ionity.eu)

# ID. Charger

The ID. Charger will enable you to charge your EV seamlessly, making it ready to depart on your next journey. All you need to do is order the ID. Charger online from your retailer and we will look after the rest including a remote home check, installation and setup.<sup>1</sup> For eligible private and commercial customers, SEAI offer an EV Home Charger Grant of €600 towards the cost of purchasing an ID. Charger with Installation.



There are three different variants of our ID. Charger:

## ID. Charger

- » Charging performance – up to 7.4 kW AC (single-phase) or 11 kW AC (three-phase)
- » The attached (Type 2) charging cable is fixed to your ID. Charger with an option of 4.5 m or 7.5 m length
- » Integrated DC fault current detection  $\geq 6$  mA - no RCD type B required (Saving up to €200)
- » Dynamic load management (Blackout Protection) ready<sup>2</sup>

**ID. Charger from €494**  
**ID. Charger + Installation from €729\***

(\*From €1,329 before SEAI Grant<sup>3</sup>)

## ID. Charger Connect (In addition to ID. Charger)

- » Wi-Fi/Ethernet communication
- » Secure and stable LTE mobile communication<sup>4</sup>
- » Safe data transfer using the latest standard (OCCP 2.0)
- » Safe access control with RFID card
- » Remote access via Volkswagen We Connect ID. app
- » Future proof via remote software updates
- » Plug & Charge (ISO 15118) via software update
- » EEBUS communication for energy management via software update

**ID. Charger Connect from €764**  
**ID. Charger Connect + Installation from €949\***

(\*From €1,549 before SEAI Grant<sup>3</sup>)

## ID. Charger Pro (In addition to ID. Charger Connect)

- » Secure and stable LTE mobile communication included
- » MID certified electricity monitoring and deduction, e.g. for company car drivers

**ID. Charger Pro from €1,114**  
**ID. Charger Pro + Installation from €1,279\***

(\*From €1,879 before SEAI Grant<sup>3</sup>)



## Standard Installation package

You order. We'll take care of the rest. We offer everything you need to start your electrifying future. The following services are included in our standard installation package:

- » Remote/Virtual Home Check and if necessary Physical On-Site Home Check
- » Up to two wall openings
- » Up to 15 m cabling from fuse box to ID. Charger
- » Residual current and wiring protection
- » Installation and commissioning

## Installation Package Benefits

- » Comprehensive Installation package and ID. Charger from one supplier
- » Professional and Safe Electric Registered Electrical Contractor (REC)
- » Installation of fuses recommended by law
- » 24-month guarantee on the Installation
- » Seamless on-site and after sales support

<sup>1</sup> The customer should apply for the SEAI grant before ordering the ID. Charger. Please see [www.seai.ie](http://www.seai.ie) for further information.

<sup>2</sup> Our standard installation package does not include a Dynamic Load Management solution. Whether this is required will be jointly evaluated during the remote home check with the installation provider. Homes with other large power consumers such as electric shower or heat pump need this solution to manage the total house load. In case it is needed, our installation partner will offer it directly to you for approximately €240.

<sup>3</sup> For eligible private and commercial customers, SEAI offer an EV Home Charger Grant of €600, see [www.seai.ie](http://www.seai.ie) for further information.

<sup>4</sup> Optional add-on €215

For further information visit [www.volkswagen.ie](http://www.volkswagen.ie)